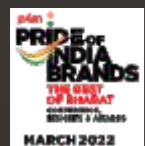


 **GreatWhite**[®]
THE FUTURE OF BRIGHT

**GO FOR
GREAT**

IN DESIGN,
QUALITY
AND
PERFORMANCE.

 **GreatWhite**[®]
THE FUTURE OF BRIGHT



GreatWhite FZCO
4E B 347, P.O BOX # 293620, Dubai Airport Free Zone, (DAFZA),
Dubai, UAE. Tel: +971 4 2340067, Email: sales@greatwhite.ae, Web : great-white.in/int

GreatWhite Global Pvt. Ltd.
13th Floor, B-Wing, Peninsula Business Park, Senapati Bapat Marg, Lower Parel (W),
Mumbai 400 013. Tel: 022 300 36565
E-mail: info@great-white.in, Web: www.great-white.in



great-white.in/int



Newsletter
2023

Tiger Shroff for GreatWhite

Tiger Shroff



Since our inception, we have been striving to provide an extraordinary lifestyle through revolutionary products in the home electrical space.

We started our journey with a vision to make comfort and luxury a reality. With passion, relentless efforts and commitment we have developed quality and innovative solutions. We are proud to be honored as the "World's Best Brand of the year 2017-18" for South East Asia. In the year 2022, we have added another feather in our cap by bagging 'The pride of India Brands' award in the home electrical category at the Best of Bharat Awards 2022 hosted by Exchange4Media.

With extensive research and development, we have developed products that are a perfect blend of design and technology. All GreatWhite products are crafted to perfection at our two state of the art manufacturing facilities that are over 2,00,000 sq. ft. and 3,00,000 sq. ft. respectively. To provide an extraordinary lifestyle, we have developed revolutionary products like new age Switches, LEDs, Fans, Home Automation, Wires & Cables, Switchgears and more.

We are proud to spread the Great lifestyle across India with more than 5000 dealers. With a vision to establish our footprints across the globe, we have marked our presence in UAE, Nepal and Africa. Renowned for quality, GreatWhite has a vast clientele in India from various industries like real estate and infrastructure, hospitality, government institutions and more. We are proud to work closely with the top architects, consultants and designers in India.

At the heart of GreatWhite lies Innovation, luxury and passion. At GreatWhite, we leave no stone unturned to raise the quality of life and therefore, we create solutions that harmonize design and technology. Join us in our journey of luxury indeed in the journey of Great.

Transforming
Lifestyles
Through Innovation
& Technology

Living the future

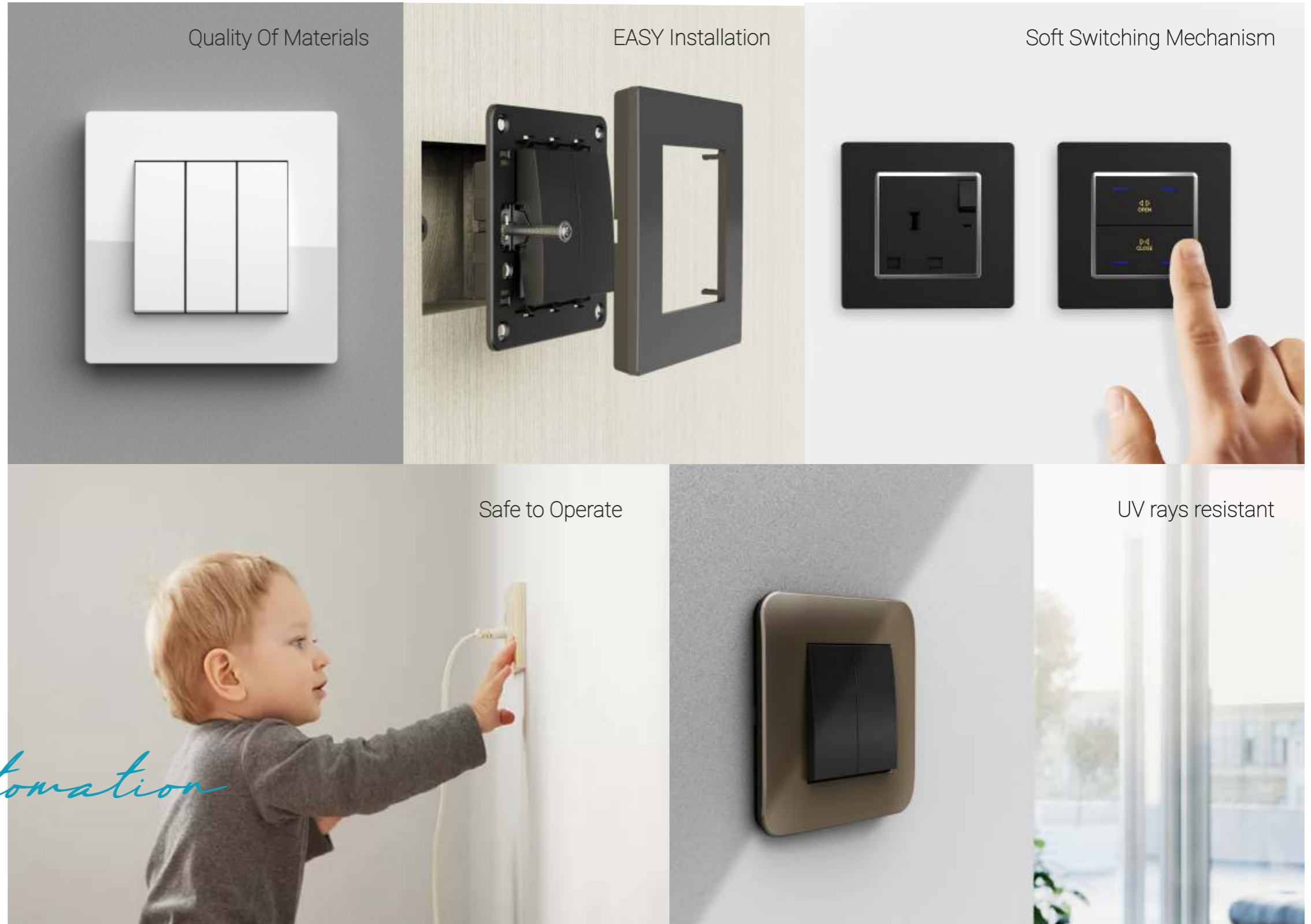
With our home automation solution, the home of your future can be your home today.
Be futuristic and experience the Great lifestyle with our smart solutions.



HOME *automation*

arcus B
Series

arcus **B** Series



HOME automation

arcus | **B**
Series



Arcus B is a complete, contemporary and yet a practical range that looks elegant at home in any interior, satisfies your fundamental need for a reliable safe switches and sockets that are instilled with the values of quality and functionality to provide a comfortable living.

Reliability and performance is built in to every product, setting standards and creating new benchmarks with trusted engineering and ground-breaking technologies. Arcus B is fully compliant with British Standards, each product undergoes 100% electrical and visual testing at the point of manufacture.



Imagination
influences
everything

myrah[®]

IMAGINATION UNLIMITED



The ability to imagine things pervades our entire existence. It influences everything we do, think about and create. It leads to elaborate theories, dreams and inventions in any profession from the realms of academia to engineering and the arts. Ultimately, imagination influences everything!

With unfolding imagination, we have intended to create products that successfully deliver a comfortable life.

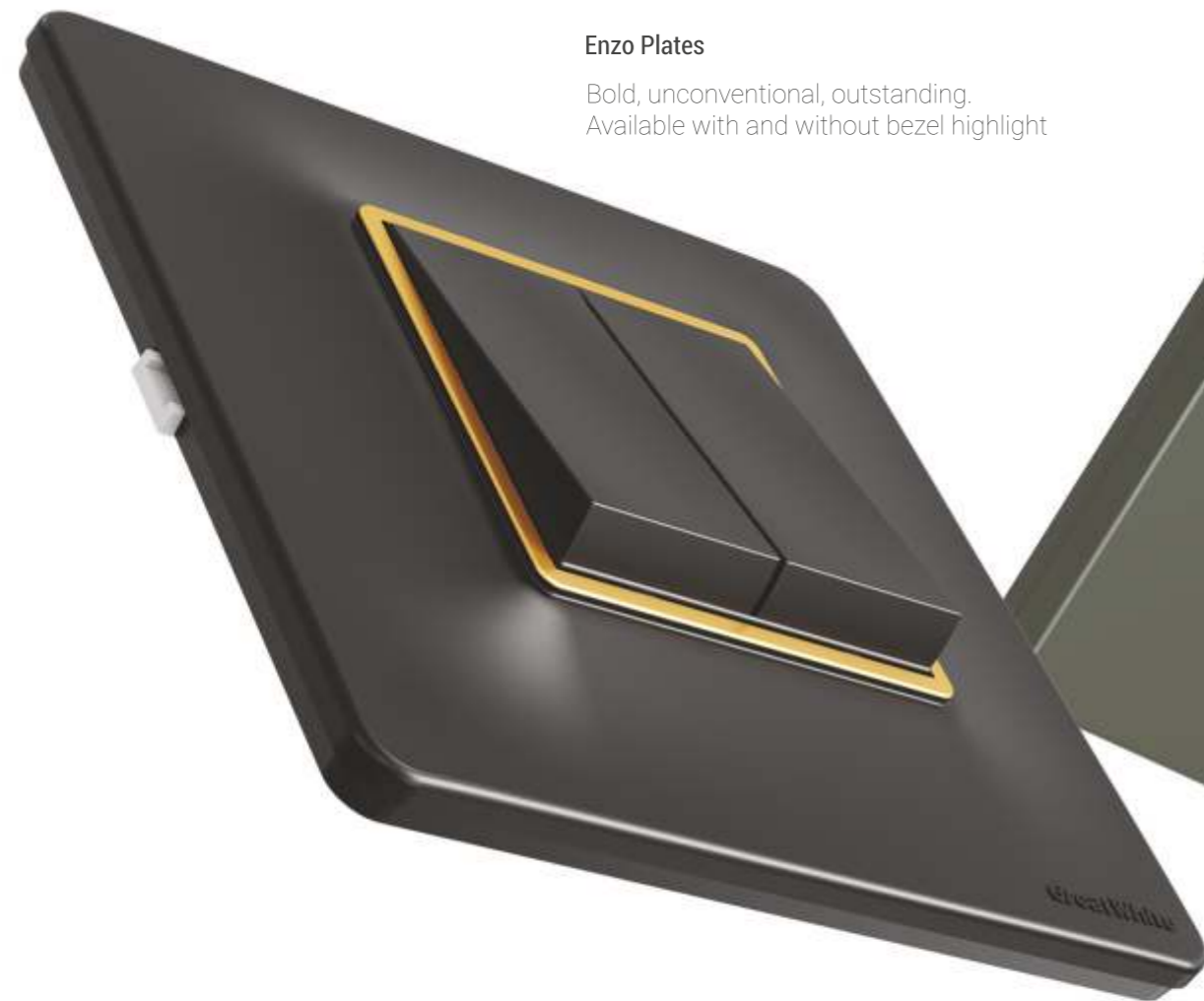
TRIVO[®]
LASTS A LIFETIME

created for you,
for your every need.

GreatWhite[®]
THE FUTURE OF BRIGHT

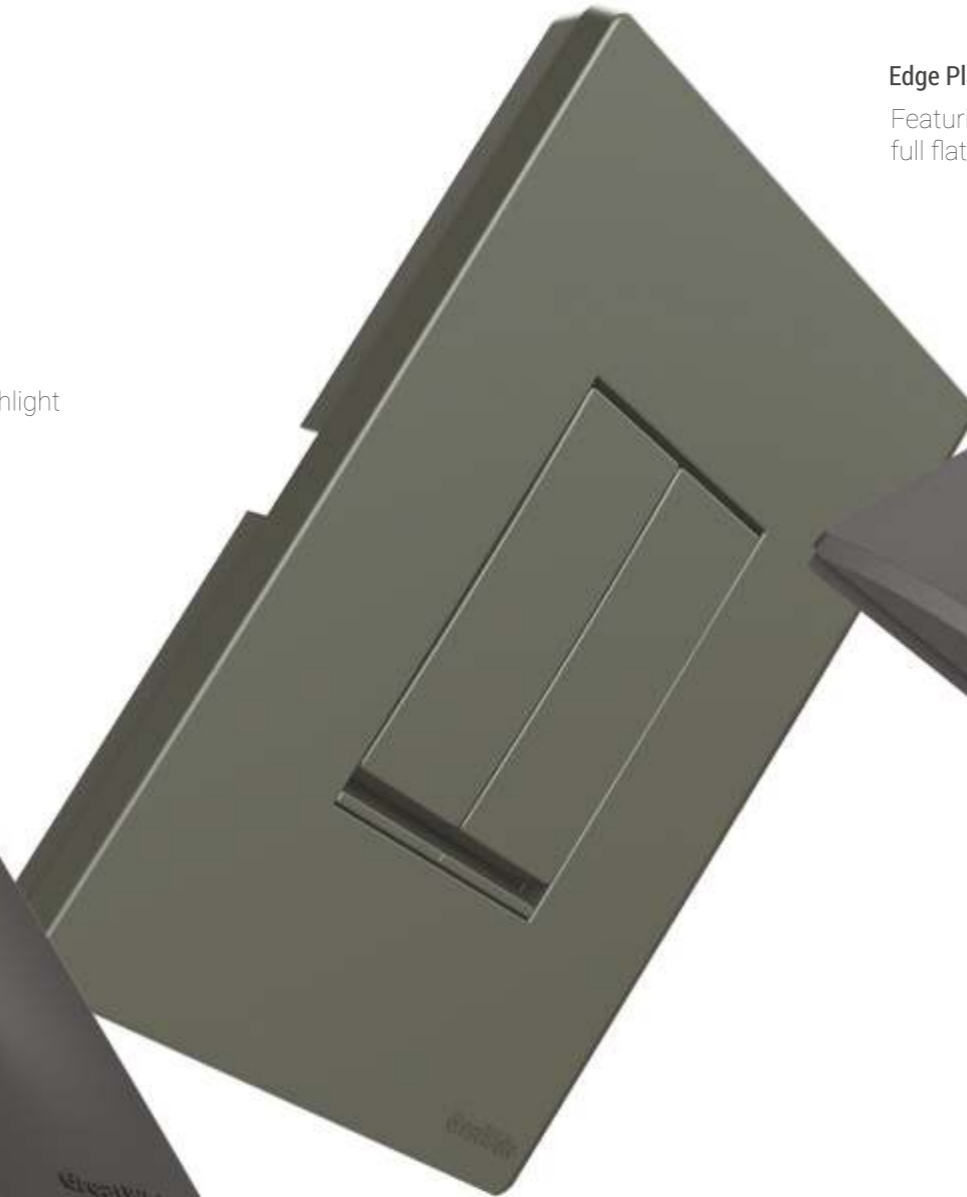
Enzo Plates

Bold, unconventional, outstanding.
Available with and without bezel highlight



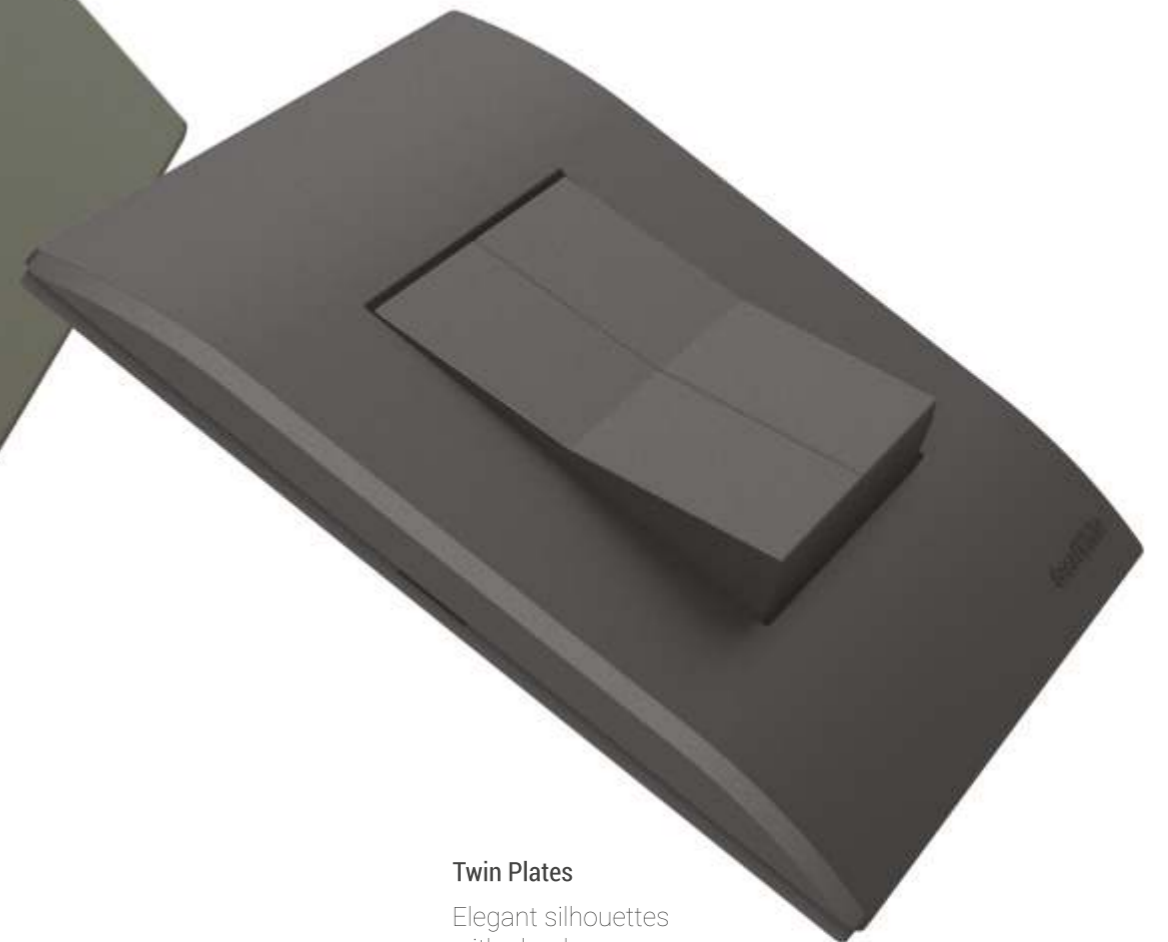
Edge Plates

Featuring uniform and uninterrupted
full flat looks that's modern and very minimalistic

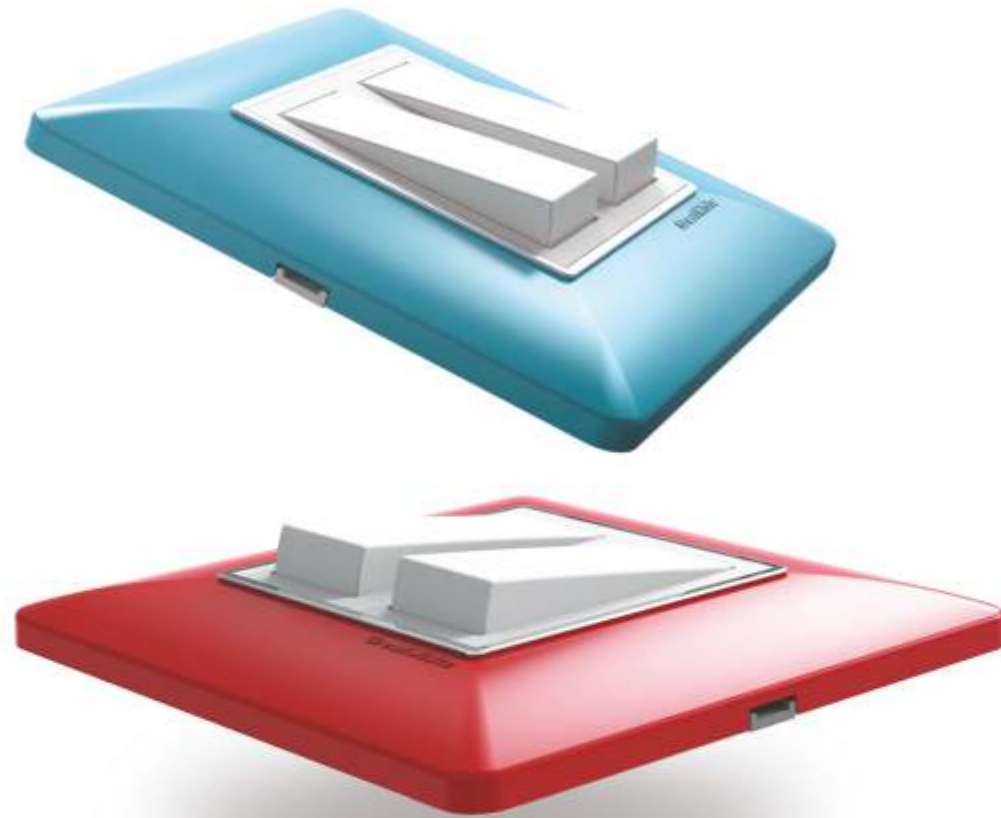


Twin Plates

Elegant silhouettes
with slender curves



When it comes to choosing a switch, Trivo opens up a world of possibilities for you. These switches are made keeping your every wish in mind. From designs and colors to textures and finishes, we're here for You - As you like it! No need to look further, Trivo is a luxury switch solution for your every preference.



enhances beauty.
ahead in technology.

Introducing Fiana switches that ease up life. The switches are designed with an upgraded technology that ensures smooth operation. The smooth switching functionality, sophisticated design and wide range of colours make it the most eligible switch at every home.

PETRA[®]

a trustable companion for everyday living

Your home is your little world that has everything you need. Our Petra range of switches and accessories make your everyday living simple. Designed to cater the basic needs of every home, Petra products are manufactured with high quality materials with the support of ultra-modern technology.

bsi. CE   

GreatWhite[®]
THE FUTURE OF BRIGHT

Discover a varied selection of contemporary electrical accessories for diverse household requirements from Doorbells, Plug Tops, Holders, Adaptors, Spike Guards and lots more. The benefits of quality, functionality and affordability are inculcated in each product that helps you everyday .





GreatWhite[®]
THE FUTURE OF BRIGHT

LUMAPRO[®]
GreatWhite

illuminating spaces
elegantly

GreatWhite Lumapro brings you high quality LED lighting solutions with Down Lights, Surface Lights, Panel Lights, Track Lights, COB Lights, Spot Lights, Strip Lights, Bulbs and Battens for a wide variety of residential and industrial applications. The Lumapro LED lighting solutions help lessen maintenance and reduce the energy use. It has an advanced built-in driver technology for smooth functionality. Our lighting solutions are environment friendly as it save more than 85% of energy.

GENERAL FEATURES

Low Power Consumption | Up to 85% energy saving* | High/Good Color Rendering (CRI) | High Lumen efficacy | Eco efficient | High system efficiency Glare free, ensures uniform light distribution | Instant start/Instant Light | Flicker Free No UV/IR Radiation | No Mercury content | High efficiency SMPS based driver





intelligent way of living

GreatWhite is committed for a Green and sustainable universe. Experience QURUS, our wide range of Sensors, for energy saving Lighting automation. With unique features like, hands-free hygiene switching and daylight harvesting, QURUS lead the way in providing cutting edge lighting solutions for Industrial, Commercial and Smart Home Applications.

QURUS Sensors: **ON-OFF** Sensors | **Dimming** Sensors | **DALI** Sensors | **KNX** Sensors

QURUS[®]
Smart Lifestyle Solutions



uPVC Conduits

The world around us is growing at a rapid pace. The necessities and demands of contemporary households have transformed. At GreatWhite, we understand that with the increase in standard of living there is an increase in demand for safety and hence we are creating solutions for the changing lifestyle. Since its inception, GreatWhite has developed revolutionary products made from highest quality raw materials and has set a benchmark in the home electrical industry.



uncompromising
safety guaranteed

GreatWhite brings electrical conduits that are manufactured from a specially formulated unplasticised polyvinyl chloride (uPVC) to meet the demands of the contemporary homes. Made from extra virgin uPVC, GreatWhite conduits have higher impact strength and can withstand the toughest installation environment. GreatWhite conduits provide immense protection to wires against evolving times and situations.



AIRUS

Flying Wali Feeling

the saga of luxury,
innovation and performance.



the future
now shock proof



Weather Proof
Box (Ip55)

IP55 Protection

Protects From Limited Dust Ingress &
Low Pressure Water Jets From Any Direction
As Per Iec: 60529



XT10™

BOXit®

RXT 10™

GreatWhite Switchgears ensure the safety of cables and other electronic peripherals with a dual protection system that safeguards against thermal overload and electromagnetic short circuit. Manufactured using quality components, like Silver Inlaid Copper, maximise contact reliability and provide increased energy savings. Housed in a high strength, flame retardant material with shock proofing and snap push technology improves safety and ease during mounting and demounting without interfering with other MCB's within the distribution board. Designed to surpass the highest international standards with a massive 10KA breaking capacity for the full range of 0.5A to 63A and a unique mid trip feature that allows instant identification of faulty circuits.

secure your world with the power of 3

At GreatWhite, we believe in uncompromised safety. With this unwavering belief, we have created Secure-X wires and cables with triple layered Insulation that provides three times more protection than ordinary cables. The wires & cables have a heart of the copper with highest purity electrolytic grade and it's insulated with a superior grade PVC compound, tailor made for each cable. Manufactured at state-of-the-art facilities with best manufacturing practices adhering to international standards, our wires and cables are safe and reliable.

The range includes Single Core PVC Insulated Wires for residential purpose. The category also includes Panel Wires, Multi Core PVC Insulated and Sheathed Cables adhering to BS and International Standards.

- 3** Triple Layer Triple Protection
-  105°C Base Insulation
-  Pure Copper
-  Pure PVC Insulation

THE
POWER
OF **3**

SecureX
WIRES & CABLES



great-white.in/int



Switches &
Home Automation |
Lighting | Fans |
MCBs & RCCBs |
Wires & Cables |
uPVC Conduits | Sensors

Proudly placed as one of Asia's Top 50 fastest-growing brands, GreatWhite began its journey in 2012. Over time, the company has created its unique position as an innovative, stylish and contemporary brand.

From Switches to LEDs and from MCBs to Fans, GreatWhite covers the entire electrical spectrum. Ambitious leaders, a passionate team, the drive to do more and the expertise to back it all makes GreatWhite a future-ready and innovative brand. With bright moments created in the past and brighter milestones to achieve in the future, the sky is the limit for the company.